


When you don't need an exact answer, you can estimate.

'Tis especially useful when dealin' with big numbers.



For example, to estimate this sum, you could just add the millions.


$$128,914,548 + 42,238,936$$

Since $128+42$ equals 170...

...128 million plus 42 million equals 170 million.

Aye. The sum o' these two numbers be about 170 million.


$$128,914,548 + 42,238,936 \approx 170,000,000$$

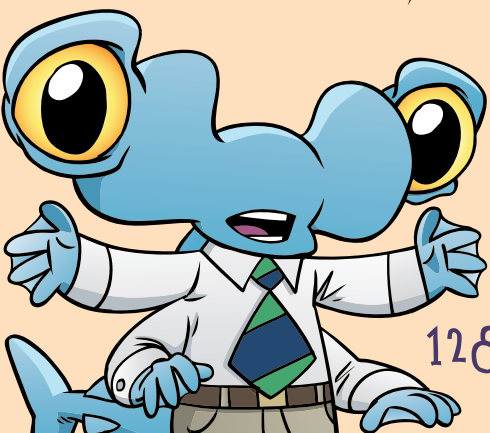
THE \approx SYMBOL MEANS "IS CLOSE TO." IT IS USED TO SHOW THAT TWO AMOUNTS ARE CLOSE TO EQUAL.

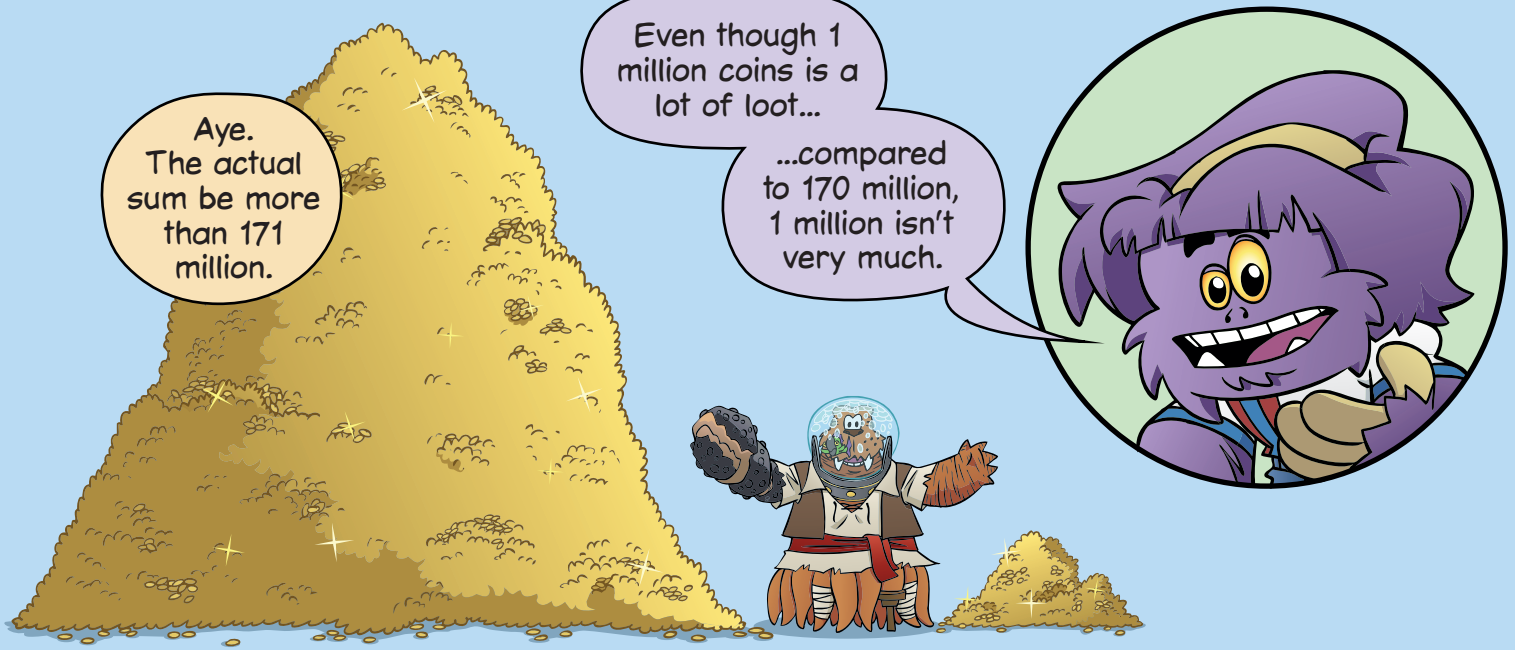
But, when you estimated...

...you left out over 900,000 coins from the big pile...

...and over 200,000 coins from the small pile.

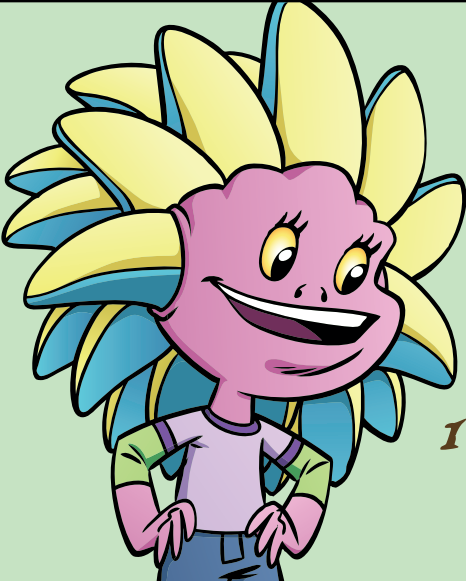
That's over 1 million coins that didn't get added!


$$128,914,548 + 42,238,936 \approx 170,000,000$$



***TO ESTIMATE** MEANS TO FIND A NUMBER THAT IS CLOSE TO THE RIGHT AMOUNT.
AN ESTIMATE IS THE NUMBER YOU PICK THAT IS CLOSE TO THE RIGHT AMOUNT.






I looked for numbers that are close to the actual numbers, but easier to add.

The sum is about the same as $160,000 + 90,000$, which is 250,000.

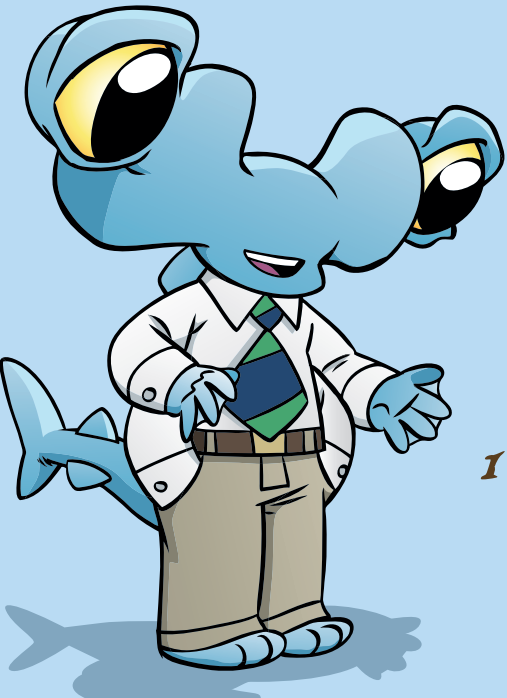
$$158,921 + 93,162 \approx 160,000 + 90,000$$

$$160,000 + 90,000 = 250,000$$


I used $160,000 + 95,000$ to estimate, since 93,162 is closer to 95,000 than to 90,000.

So, the sum is about $160,000 + 95,000$, which is 255,000.

$$158,921 + 93,162 \approx 160,000 + 95,000$$

$$160,000 + 95,000 = 255,000$$


I added $150,000 + 100,000$.

Since one number got smaller, and the other got bigger by about the same amount...

... $158,921 + 93,162$ is about the same as $150,000 + 100,000$, which is 250,000.

$$158,921 + 93,162 \approx 150,000 + 100,000$$

$$150,000 + 100,000 = 250,000$$

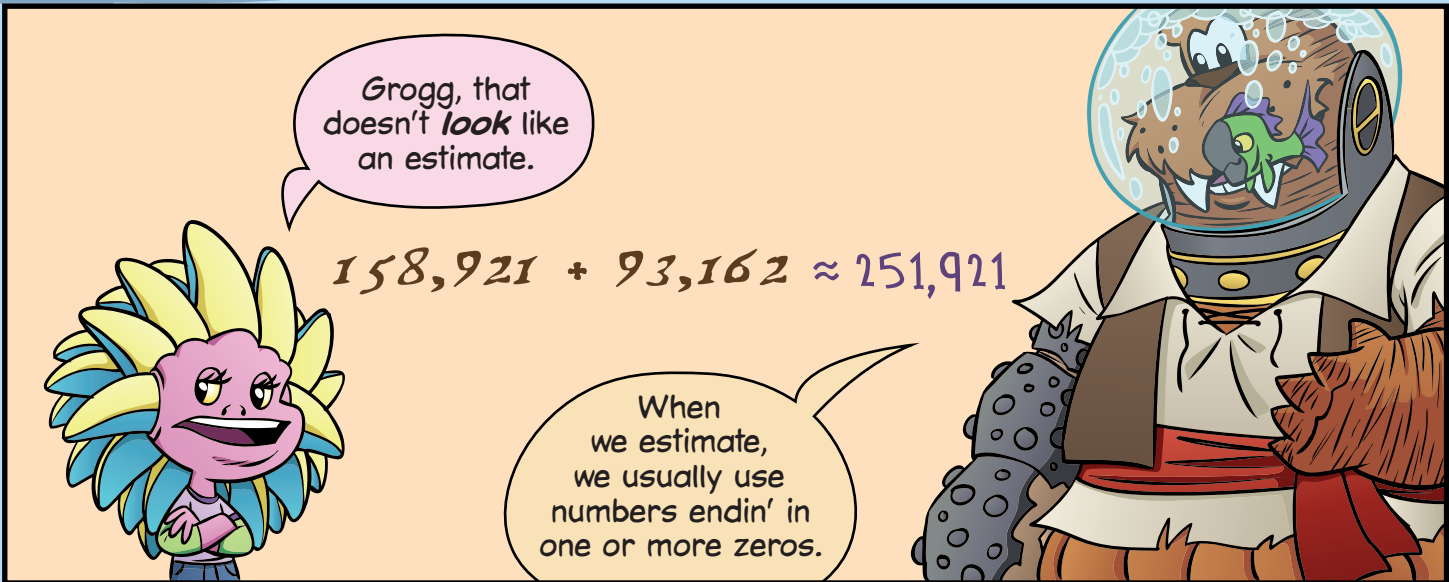


Hmmm... My estimate looks a little different.

Starting with 158,921, I knew I had to add about 93,000.

So, I added 100,000 and took away 7,000 to get 251,921.

$$158,921 + 93,162 \approx 158,921 + 93,000$$
$$158,921 + 93,000 = 158,921 + 100,000 - 7,000$$
$$= 251,921$$



Grogg, that doesn't *look* like an estimate.

$$158,921 + 93,162 \approx 251,921$$

When we estimate, we usually use numbers endin' in one or more zeros.



Since you were only addin' thousands to get the sum...

...'tis better to write zeros for the hundreds, tens, 'n' ones digits.

That way, no one will mistake your estimate for the actual sum.