

CHAPTER 9: THE ATMOSPHERE



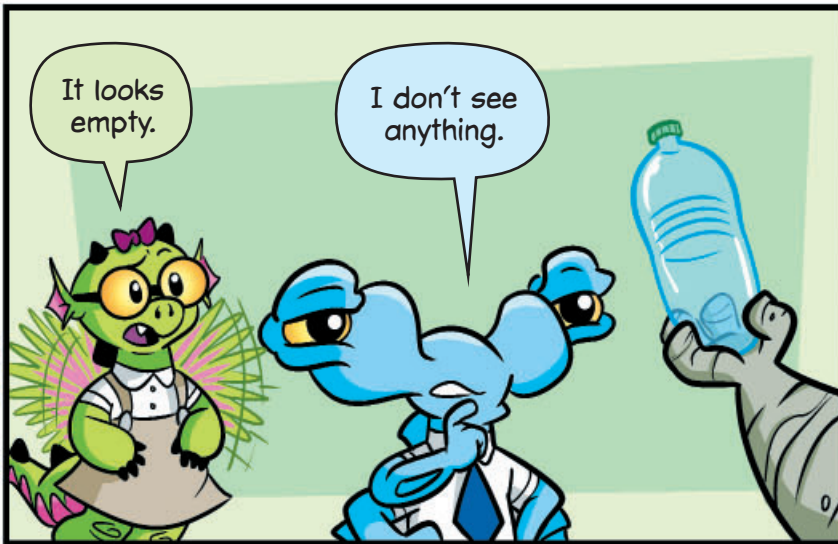
Weather describes the conditions in our **atmosphere**—the air all around us. Distance from the equator is not the only thing that affects weather patterns. How does the atmosphere change as you get farther from Earth's surface?

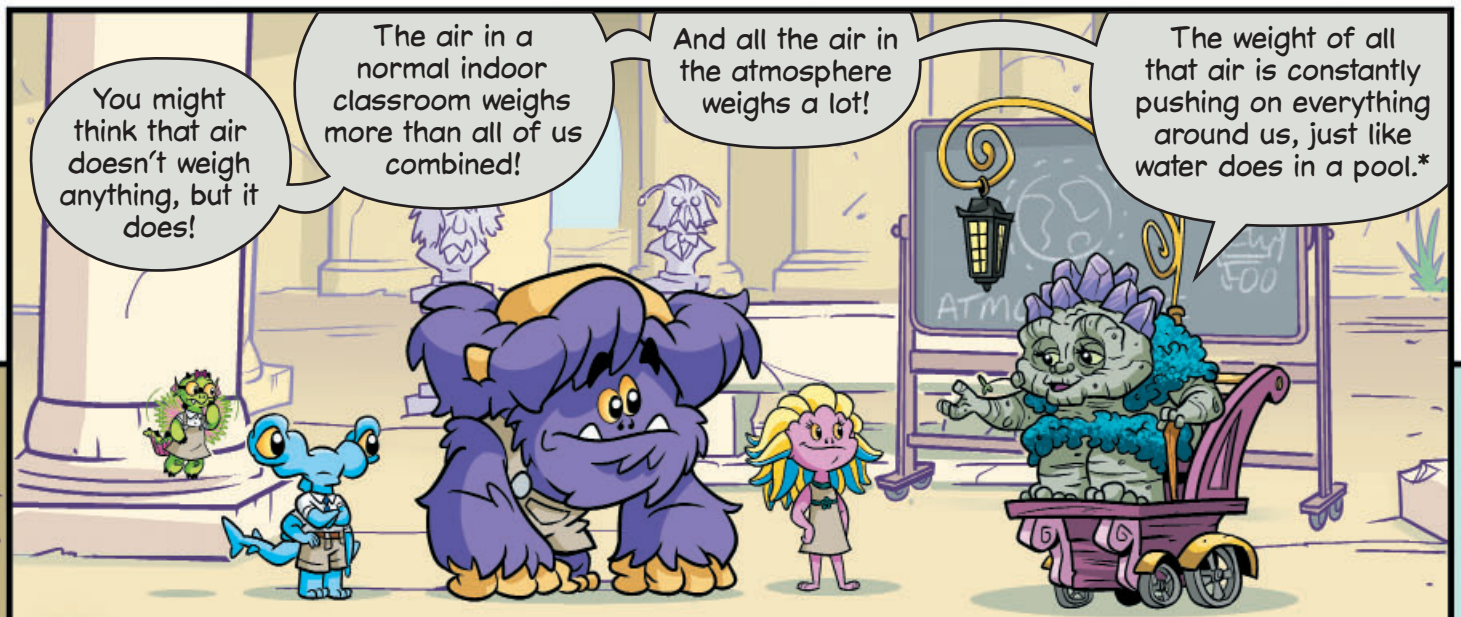
Mount Kilimanjaro is the highest mountain in Africa, rising 5,895 meters (19,341 ft) above sea level in Tanzania, near the Kenyan border.

It is practically on the equator, so temperatures on the mountain don't change much from month to month. But, temperatures change a lot between the base of the mountain and its peak.

Its peak stays below freezing and has ice and snow year-round. At the base of the mountain, temperatures are usually in the 70's and 80's. Why?







*IF YOU'VE EVER BEEN DEEP UNDER WATER IN A POOL, YOU'VE PROBABLY FELT PRESSURE IN YOUR EARS. THE DEEPER YOU GO, THE MORE PRESSURE YOU FEEL.



